

### 12. TINNEY'S FIRS

Planted by John Tinney and owned by William Tinney as a Franchise Wood in 1837, it is now managed by the Woodland Trust.

*(Various tracks divert from here, to Woodfalls and Redlynch)*



### 15. WOODFALLS POST OFFICE

Opened in 1936, it is now the only local shop and Post Office. The first sub-postmaster was Frank Knight. *(A public footpath beside the Post Office leads to Harthill Drove)*



c 1930's

### 18. WOODFALLS CARE

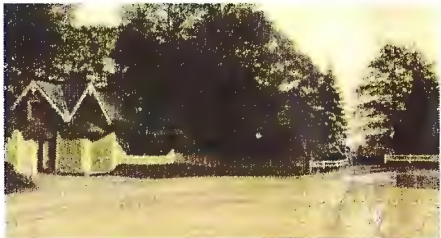
Hickman's Corn merchants operated here during the early 20th Century until 1947.



Highcliffe  
c 1900

### 21. BOWER'S HILL

Named after Peter Bower (1715 – 1795) a clockmaker, known for his 30 hour long case clocks. The Lodge was built about 1820 with later additions.



c 1909

### 13. WOODFALLS CROSS –

#### SHEDS FOR BUSES.

On the left hand side of road, behind the hedge, are two recently restored sheds, used in the 1930's by Wilts & Dorset to house their buses. Chalke's sawmill was opposite on the site of the Social Club. Another sawmill was Green's in Vale Road, now Greensmeade.



### 16. THE OLD INN

Originally called the New Inn, it was re-fronted and renamed in 1890. The village pond was on the corner. A Whitsuntide Fair used to be held on a large field to the rear, where houses now stand.



pre 1920s

### 19. WOODFALLS & MORGAN'S VALE VILLAGE HALL

Built as a Church Hall in 1920-21, on land given by Frances Robinson of Redlynch House in memory of her husband Octavius.

*(You may wish to detour left into Morgan's Vale Rd.)*



### 22. WAR MEMORIAL

Originally sited on the opposite corner in Morgan's Vale Rd. it was moved in 1976. There was once a pond on this site. Kiln Lane alongside had brick and iron industries in the mid 18th century.



### 14. WOODFALLS INN

Formerly called The Bat and Ball, it dates from the early 20th century, but has been extended.



### 17. WOODFALLS METHODIST CHAPEL

Built in 1874 by Charles Mitchell.

#### WOODFALLS BAND HALL

The Band was formed in 1874 and the Mission Hall was built in 1882.



c 1906

### 20. ST. BIRINUS CHURCH

Designed by C. Ponting and built in 1894-96, from local bricks.

#### MORGAN'S VALE & WOODFALLS SCHOOL

Built in 1869, it served as a Chapel on Sundays until the Church was built.



The trail may be followed in any order.